

FEBRUARY
2021

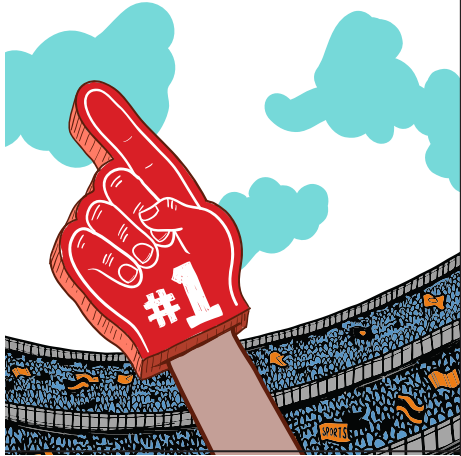
Preteen
WEEKLY CUES

YOU GOT
THIS!

Theme

Super Fan: Cheer Each Other On

Kindness is showing others they are valuable by how you treat them.



Week One

Ephesians 4:32
God Was Kind to Us

ASK THIS:
What does kindness look like?

Week Two

The Book of Ruth
Ruth and Boaz

ASK THIS:
When is it hard to be kind?

Week Three

Matthew 5:41
Go the Extra Mile

ASK THIS:
Have you ever received unexpected kindness?

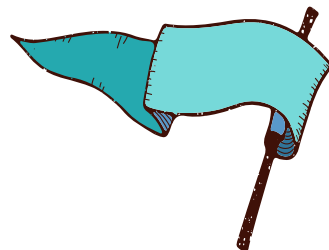
Week Four

Luke 10:25-37
Good Samaritan

ASK THIS:
How can you be kind to people who are different from you?

REMEMBER THIS

“You are God’s chosen people. You are holy and dearly loved. So put on tender mercy and kindness as if they were your clothes. Don’t be proud. Be gentle and patient.”
Colossians 3:12, NIRV



FEBRUARY
2021

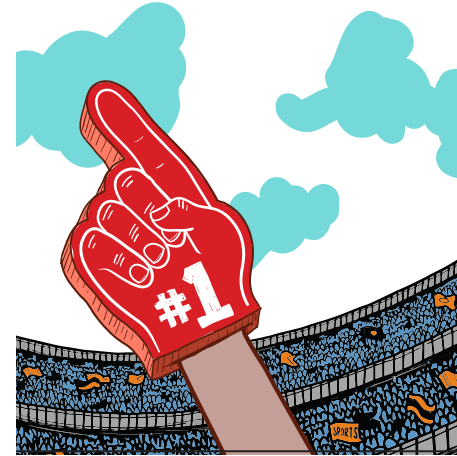
Preteen
WEEKLY CUES

YOU GOT
THIS!

Theme

Super Fan: Cheer Each Other On

Kindness is showing others they are valuable by how you treat them.



Week One

Ephesians 4:32
God Was Kind to Us

ASK THIS:
What does kindness look like?

Week Two

The Book of Ruth
Ruth and Boaz

ASK THIS:
When is it hard to be kind?

Week Three

Matthew 5:41
Go the Extra Mile

ASK THIS:
Have you ever received unexpected kindness?

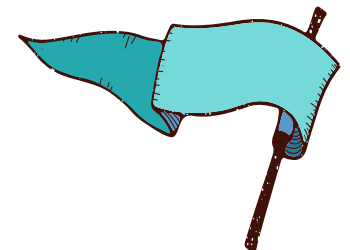
Week Four

Luke 10:25-37
Good Samaritan

ASK THIS:
How can you be kind to people who are different from you?

REMEMBER THIS

“You are God’s chosen people. You are holy and dearly loved. So put on tender mercy and kindness as if they were your clothes. Don’t be proud. Be gentle and patient.”
Colossians 3:12, NIRV



Preteen

DAILY CUES



Morning Time

Put a special treat (that is prewrapped) with your child's breakfast. Tell them to take this with them to school as a reminder to do something extra sweet for someone else. They could even give that special treat to a friend. Tell them to not eat it until the job is done! Remind them to be kind to others because God is kind to them.



Drive Time

Go through your closet, toys, or pantry and fill a bag to donate to a local cause. As you are in the car on your way to donate items ask your child, "How do you think these items will show kindness to someone else? What does it feel like to be kind to someone you won't ever meet? Why should we do this?"



Meal Time

Q & A FOR KIDS: What are you the biggest fan of?

Q&A FOR PARENTS: Who are you the biggest fan of?



Bed Time

Jesus says that true kindness goes further than just following the rules. It means not only that you don't hit your brother, but maybe you let him take the last cookie. Brainstorm at least three ways you could show kindness where you don't have to during week. Pray that God will show you opportunities to "go the extra mile" each day.

Preteen

DAILY CUES



Morning Time

Put a special treat (that is prewrapped) with your child's breakfast. Tell them to take this with them to school as a reminder to do something extra sweet for someone else. They could even give that special treat to a friend. Tell them to not eat it until the job is done! Remind them to be kind to others because God is kind to them.



Drive Time

Go through your closet, toys, or pantry and fill a bag to donate to a local cause. As you are in the car on your way to donate items ask your child, "How do you think these items will show kindness to someone else? What does it feel like to be kind to someone you won't ever meet? Why should we do this?"



Meal Time

Q & A FOR KIDS: What are you the biggest fan of?

Q&A FOR PARENTS: Who are you the biggest fan of?



Bed Time

Jesus says that true kindness goes further than just following the rules. It means not only that you don't hit your brother, but maybe you let him take the last cookie. Brainstorm at least three ways you could show kindness where you don't have to during week. Pray that God will show you opportunities to "go the extra mile" each day.